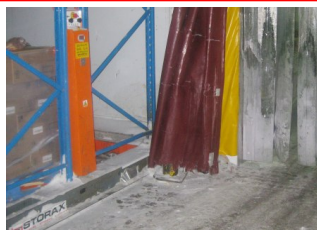




## NOVEMBER 2011 - NEWSLETTER

### Ice melt

Cold room doors, in general, do not seal properly. When the door is opened in the morning there is a build up of ice in the doorway which can cause reach trucks to slip and in some instances to get stuck. The usual method of removing this ice is to chop it out. Inevitably there is damage to the surface of the concrete floor. As water slowly penetrates into the concrete on an ongoing basis, and then freezes, the concrete is damaged further. Ice Melt is a white powder which heats the ice and melts it. The slush can then be swept away without the need to use shovels or crowbars. Damage to the floor is avoided. Our new stock has arrived and is available in containers of 2kg.



*"Ice Melt is such a simple and effective product I almost can't believe guys in industry do not know about it." Rick du Toit, Vector Logistics*

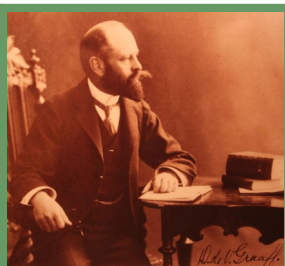
Ice Melt is a must for all coldstores. "So call now !"

If you'd like to place an order for Ice Melt, please contact Rosetta Hendricks email: [rosetta@barpro.co.za](mailto:rosetta@barpro.co.za)

### SARDA Energy Benchmarking Group



Members of the SARDA Energy benchmarking group met on 7 October at Barpro Storage. If you'd like to participate in benchmarking your coldstore's energy usage feel free to contact Koos Bouwer who is the convenor of the group at [bouweb@orangenet.co.za](mailto:bouweb@orangenet.co.za) or John Ackerman of SARDA at [jasac@iafrica.com](mailto:jasac@iafrica.com).



Sir David Graaff who founded Imperial Cold Storage

great uncle's butchery, Combrinck & Co. He became interested in Australian and New Zealand attempts to transport frozen meat by ship to England. After the successful voyage of the Dunedin in 1882 Graaff realised that refrigeration would revolutionise the meat industry worldwide. Travelling widely to both the US and England to learn as much as possible about abattoirs, meat packing and refrigeration, he established the Imperial Cold Storage and Supply Co. in 1899. This was just in time to supply the British army during the South African war. After that Imperial Cold Storage spread throughout Southern Africa with cold stores as far north as Zimbabwe. A portion of the original Imperial Cold Storage building still exists in Cape Town where part of it houses a Col'Cacchio Pizzeria outlet.

### Barpro Basics

#### Q: Housekeeping - again?

A: Yes, this has been a recurring theme to our newsletters, but we can't stress the issue enough. Untidiness affects mobile racks, fork trucks, doors and even staff who trip and slip on debris. A cleaning regime should be part of the cold store plan which must actually be carried out. Pieces of wood or fallen product should be cleaned up as they occur. Guide rail grooves should be cleaned often. Loose shrink wrap and paper wrapping should be secured or removed. It is a hazard to all moving objects (mobiles and fork trucks), be it wheels, gears or drive shafts. As mentioned last month, it interferes with safety photobeams too. Inspection of the STORAX drives should be carried out as part of a store's planned inspection regime. Sweepex brushes are the easy way to keep your store clean and cut down on mobile damage. They simply attach to the forklift. Magnets pick up any steel debris.



Sweepex brush

If you would like more information on either brushes or inspections please contact Rosetta Hendricks email: [rosetta@barpro.co.za](mailto:rosetta@barpro.co.za) or (021) 552 - 9190

### History of the SA Cold storage Industry

Experiencing the physical discomfort of a cold store it is tempting to find someone to blame. In South Africa this would have to be David Graaff. Also known as "the Octopus," as he had a hand in everything, David Graaff was born in Villiersdorp in 1859 and came to Cape Town to work in his

Tel: (021) 552-9190 Fax: (021) 552-9170 Email: [barpro@iafrica.com](mailto:barpro@iafrica.com)

**All hours Technical Assistance Tel: (021) 552-9191**

P.O. Box 16, Paarden Eiland, 7420 [www.barprostorage.co.za](http://www.barprostorage.co.za)  
3 Warbler Park, 3 Warbler Close, Montague Gardens, 7441